

Door Furniture and Lighting

BRITON VERTICAL PANIC BOLT

Product code: B376

- Two point locking for extra security
- Suitable for use on single and double door applications
- Self-handed - will suit both left and right handed doors
- Suitable for doors up to 2500mm high x 1300mm wide x 200kg
- Colour: Silver
- CEN classification: 37611322A
- Manufactured to BSEN1125



BRITON REVERSIBLE RIM PANIC LATCH

Product code: B378E

- Suitable for use on single doors
- Supplied in left hand, but can be reversed on site
- Suitable for doors up to 2500mm high x 1300mm wide x 200kg
- Colour: Silver
- Manufactured to BS EN1125
- CEN classification: 37611322A



BRITON DOUBLE REBATED DOOR PANIC SET

Product code: B377E

- Comprises of the Briton 376E vertical panic bolt, 378E reversible rim panic latch and 378DDS double door strike in one convenient pack for rebated double door applications
- Colour: Silver
- Manufactured to BS EN1125
- CEN classification: 37611322A



Need a risk assessment?
Call us now!

BRITON REVERSIBLE PUSH PAD RIM LATCH

Product code: B1438E

- Supplied in left hand, but can be reversed on site
- Suitable for doors up to 2500mm high x 1300mm in width x 200kg
- Can be used with a rim cylinder fitted to the outside of the door
- Colour: Silver
- Manufactured to BS EN179
- CEN classification: 37611332B



Door Furniture

BRITON OUTSIDE ACCESS DEVICE - LEVER

Product code: B1413/LE

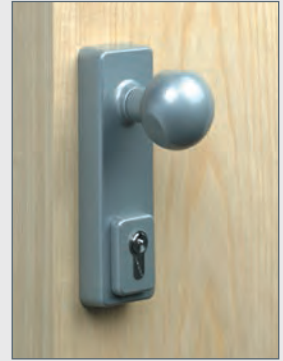
- Supplied with euro-profile cylinder as standard
- Clearly illustrated instructions and template enabling accurate installation
- Suitable for doors between 40mm and 70mm thick
- Tested to 200,000 cycles
- Colour: Silver



BRITON OUTSIDE ACCESS DEVICE - KNOB

Product code: B1413/KE

- Supplied with euro-profile cylinder as standard
- Clearly illustrated instructions and template enabling accurate installation
- Suitable for doors between 40mm and 70mm thick
- Tested to 200,000 cycles
- Colour: Silver



PANIC LATCH - REVERSIBLE

Product code: DPL/SE

- Designed to satisfy requirements of EN1125
- Tested for use on fire doors
- Suitable for doors up 1300mm wide and 2500mm high



EMERGENCY LATCH - REVERSIBLE

Product code: DEL/SE

- Designed to satisfy requirements of EN 179
- Tested for use on fire doors
- Suitable for doors up 1300mm wide and 2500mm high



OUTSIDE ACCESS DEVICE - LEVER OPERATED

Product code: DAD/LE/SE

- Handed on site for left or right hand applications
- Suitable for metal and timber doors up to 54mm thick
- Designed to be used with a 40mm single euro profile cylinder



OUTSIDE ACCESS DEVICE - KNOB OPERATED

Product code: DAD/KN/SE

- Handed on site for left or right hand applications
- Suitable for metal and timber doors up to 54mm thick
- Designed to be used with a 40mm single euro profile cylinder



PANIC BOLT

Product code: DPB/SE

- Designed to satisfy requirements of EN1125
- Tested for use on fire doors
- Suitable for doors up 1300mm wide and 2500mm high



Do you have an evacuation plan?

LETTERGARD PROTECTED LETTER BOX

Product code	Description
LGD1	Lettergard Protected Letter Box
LGDR	Lettergard Refill Extinguisher

- Fire protected letter box designed to guard against arson attacks
- Constructed from fully welded mild steel with powder coated finish
- Easy installation over British standard letter box opening
- Contains 100g FE36 automatic extinguisher, discharging at 57°C
- Keyed alike locking mechanisms available on request
- Refill extinguisher available



INTUMESCENT LETTER BOX KITS

Product code: ILB

- Designed for use in a fire rated door
- Maintains performance and integrity of fire door with the use of intumescent materials
- When exposed to heat, intumescent lining expands and fills aperture in door preventing passage of fire from one area to another
- Tested in accordance with BS476: Parts 20/22: 1987 and will provide fire resistance for more than 30 minutes
- Available as standard in a silver anodized finish. Also available in gold finish.



BRASS PADLOCKS

Product code: PLB

- Range of padlocks for general use
- Solid brass body
- Hardened steel shackle
- Supplied with 2 keys



For more information, call our customer service team

FIRE BRIGADE KEYS

Product code:

- FBK11
- FBK4
- FBK2
- FBK1
- FBK14
- FBKPK



FIRE BRIGADE PADLOCKS

Product code	Description
FB11	Fire brigade padlock
FB14	Fire brigade padlock (yellow)
FBPK	2" Fire brigade padlock



FB11



FB14



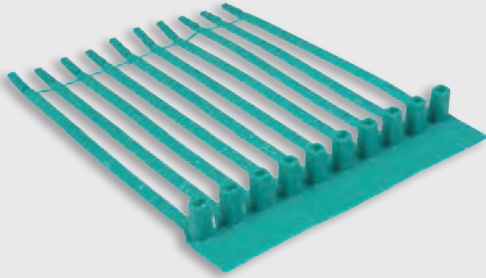
FBPK

Door Furniture

FIRE DOOR SEALS

Product code: FDS/G

- Deters unauthorised use of fire doors
- Average break strength of 10.5 kg
- Sold in strips of 10, green as standard
- Strap length 202.5mm, Strap width 8mm, Strap thickness 1.3mm



Exit signs?
Please see page 56

PANIC BOLTS & ACCESSORIES

Product code	Description
RPB1	Redlam Panic Bolt
TCR1	Redlam Ceramic Tube
TGL1	Panic Bolt Glass Tube
HC1	Hammer & Chain

Redlam Panic Bolt

- Manufactured from cast aluminium
- Supplied complete with 1 x Ceramtube, Redlam hammer, chain and fixings.
- Use of padlock (supplied separately) prevents unauthorised removal of Ceramtube
- Overall bolt size: Height 75mm x Width 165mm x Depth 55mm



RPB1



HC1



EXIT STOPPER DOOR ALARM

Product code: ST16400

- Completely self-contained 97dB electronic door alarm
- Highly visible 'stop sign' discourages unauthorised use of emergency doors
- Key operated override facility
- Compact design (127mm diameter and 48mm deep)



DOOR CLOSER

Product code: 2204/SE

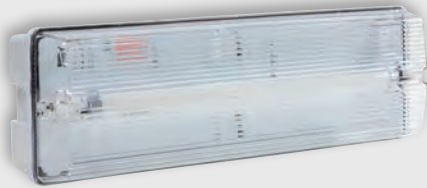
- 10 year guarantee
- Suitable for light duty use
- Fire rated for 1 hour to BSEN1634:1
- UL listed
- Rack and pinion mechanism
- Power size EN3 (door up to 950mm/60kg)



EMERGENCY BULKHEAD

Product code: BLM1

- Supplied complete with 8W T5 lamp
- Tough polycarbonate construction
- Hinged gear tray for easy installation
- Maintained version as standard - non-maintained version available on request



EMERGENCY LED BULKHEAD

Product code: BLM1/LED



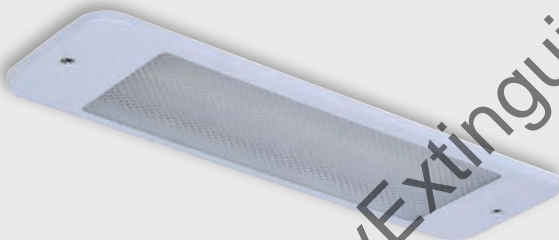
- Super energy saving LED design
- Significantly cuts running costs and environmental impact
- Tough polycarbonate construction
- Hinged gear tray for easy installation
- Maintained version as standard - non-maintained version available on request



RECESSED EMERGENCY BULKHEAD

Product code: ERL1

- Supplied complete with 8W T5 lamp
- Available in non-maintained version only
- Discreet flush mounted design
- Hinged gear tray for easy installation



EMERGENCY TWINSPOT

Product code: TSN1

- Supplied with 2 x 20W halogen lamps and batteries
- 3 hour endurance
- LED indicators to show lamp status
- Non-maintained
- Battery life expectancy of 5 years under normal conditions



EMERGENCY EXIT BOX

Product code: MBM1 (maintained)
MBM2 (non-maintained)



- Robustly constructed steel box
- Polycarbonate legend panel
- Supplied complete with 8W T5 lamp
- Choice of arrow direction



EMERGENCY EXIT SIGN

Product code: EES1



- Long life LED design
- Can be suspended or ceiling mounted
- Can be viewed from both sides
- Maintained
- Arrow down only

