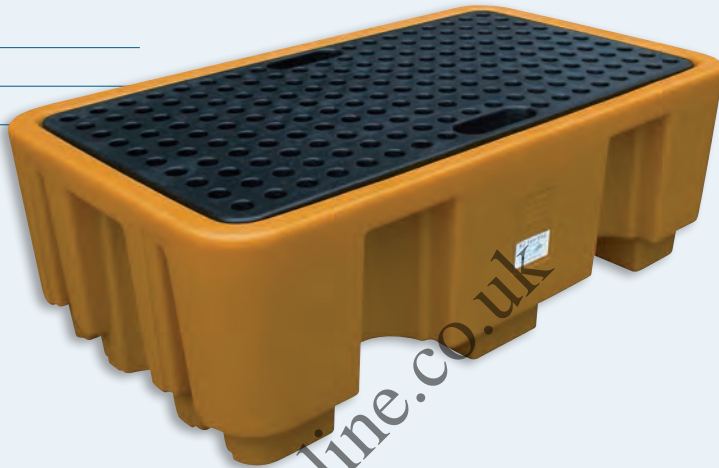


Spill Control

SPILL PALLETS

| Product code | Description |
|--------------|-----------------------|
| SPD2 | Spill Pallet - 2 Drum |
| SPD4 | Spill Pallet - 4 Drum |

- Spill pallet for 2 or 4 drums
- Removable deck
- For static spill containment



YELLOW DRUM RACK

| Product code | Description |
|--------------|-----------------------|
| SDR2 | Yellow Drum Rack |
| SDB2 | Yellow Drum Rack Base |

Yellow Drum Rack

- Drum rack for 2 drums
- Can be stacked to accommodate 4 drums
- To be used with drum rack base

Yellow Drum Rack Base

- Base for use with up to 2 drum racks
- Can be used to accommodate 4 drums
- Compatible with most forklifts for ease of movement



 Call us for more information

YELLOW DRUMKART

| Product code | Description |
|--------------|------------------------------|
| SDK2 | Yellow DrumKart with Castors |
| SDK1 | Yellow DrumKart |

Yellow DrumKart with Castors

- Ideal as a mobile dispensing unit and sump
- Easy to handle due to well balanced design
- Castors for rotation and swivel brake

Yellow DrumKart

- Ideal as a mobile dispensing unit and sump
- Easy to handle due to well balanced design
- Double walled construction for optimum strength and security against leaks



IBC YELLOW

| Product code | Description |
|--------------|--------------------------------|
| SSP2 | Single IBC yellow with deck |
| SSP1 | Single IBC yellow without deck |
| SSP3 | Twin IBC yellow |
| SDP1 | IBC dispenser for single IBC |
| SDP2 | IBC dispenser for twin IBC |

Single IBC yellow with deck

- Solid construction and ergonomic design
- Easy to maintain and clean
- Compatible with most forklifts for ease of movement

Single IBC yellow without deck

- As SSP2 but without deck
- Easy to maintain and clean
- Compatible with most forklifts for ease of movement

Twin IBC yellow

- As SSP2 but accommodates 2 pallets

IBC dispenser for single IBC

- Dispenser for use with SSP1 or SSP2

IBC dispenser for twin IBC

- Dispenser for use with SSP3

**WORK FLOOR**

| Product code | Description |
|--------------|---------------------|
| SWF4 | Work Floor - 4 Drum |
| SWF2 | Work Floor - 2 Drum |
| SWR1 | Work Floor Ramp |

Work Floor - 4 Drum

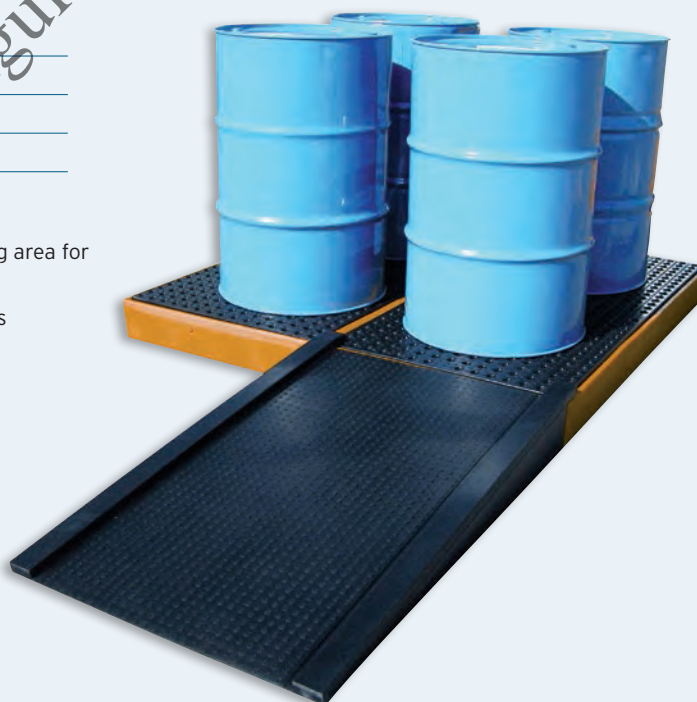
- Workfloor can be used as spill containment or dispensing area for up to 4 drums
- Units can be joined together to provide larger workfloors
- Slip resistant texture on decks

Work Floor - 2 Drum

- As SWF4 but for up to 2 drums

Work Floor Ramp

- Ramp for use with SW2 or SWF4



Speedy delivery? Talk to us for more details.